



ORODEKA®

ALEX V



ENGINE USE ROOT CANAL FILES



Exclusive thermal process

Manufactured using an exclusive thermal process. All metalurgic transitions as austenite and martensite phases are taken at room temperature, giving many benefits against other NITI files.

Controlled memory wire

Controlled memory wire allows us to respect the root canal anatomy, avoiding root weakening and the creation of ledges and transportation of canal perforations.

High Resistance

CM wire alloy with special heat treatment gives a very high resistance and flexural fatigue.

Pre-curved

It can be pre-curved and has an extreme efficiency in the most curved canals.

Shape memory

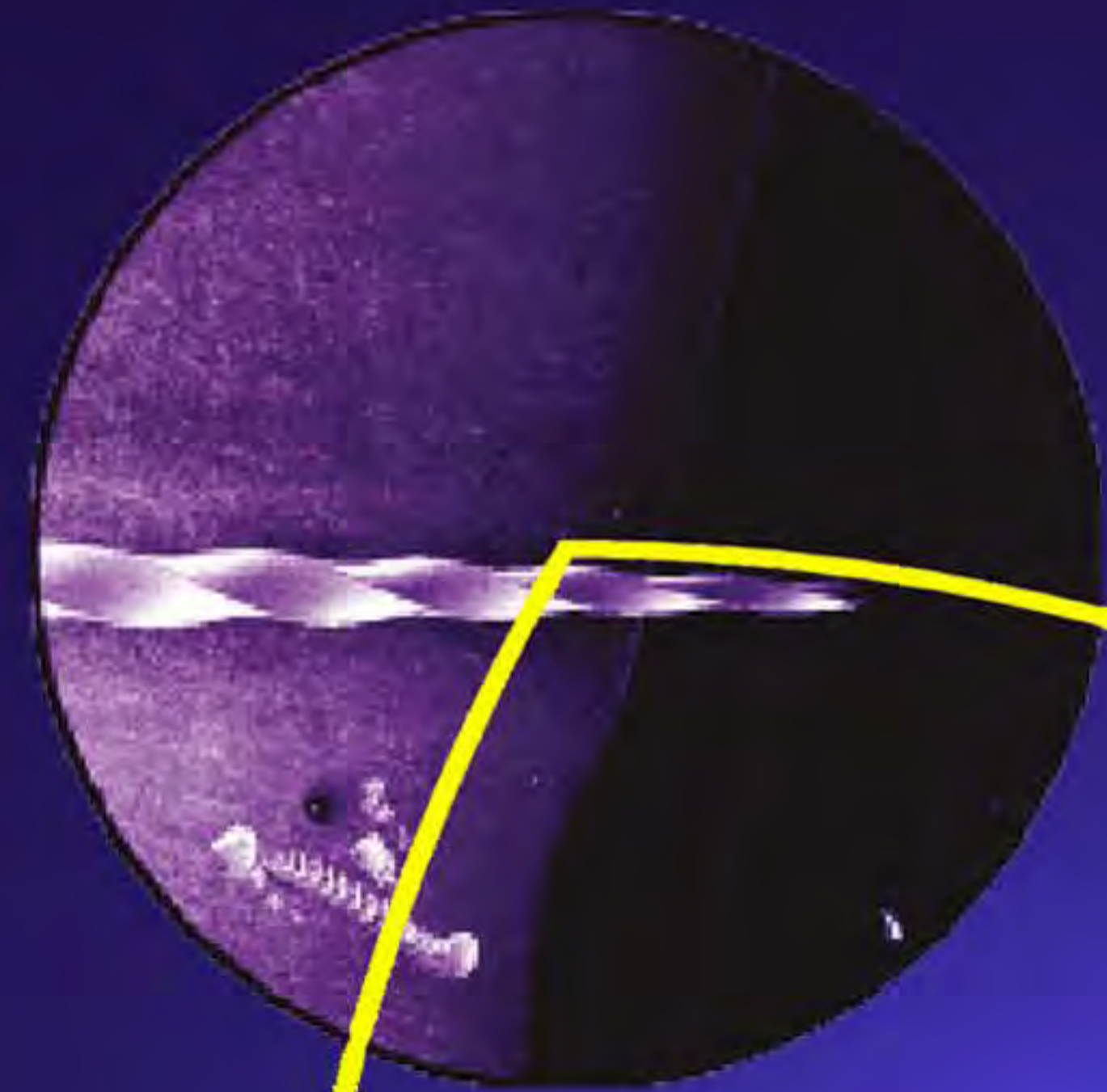
Shape memory permits the file to recover its original shape when sterilized, retrieving all the metallic proprieties and it's metalurgic structure

Triangular Convex Section

The instrument section is a triangular convex modified, it facilitates the removal of debris and reduces contact with the canal walls with a very active cutting efficiency.

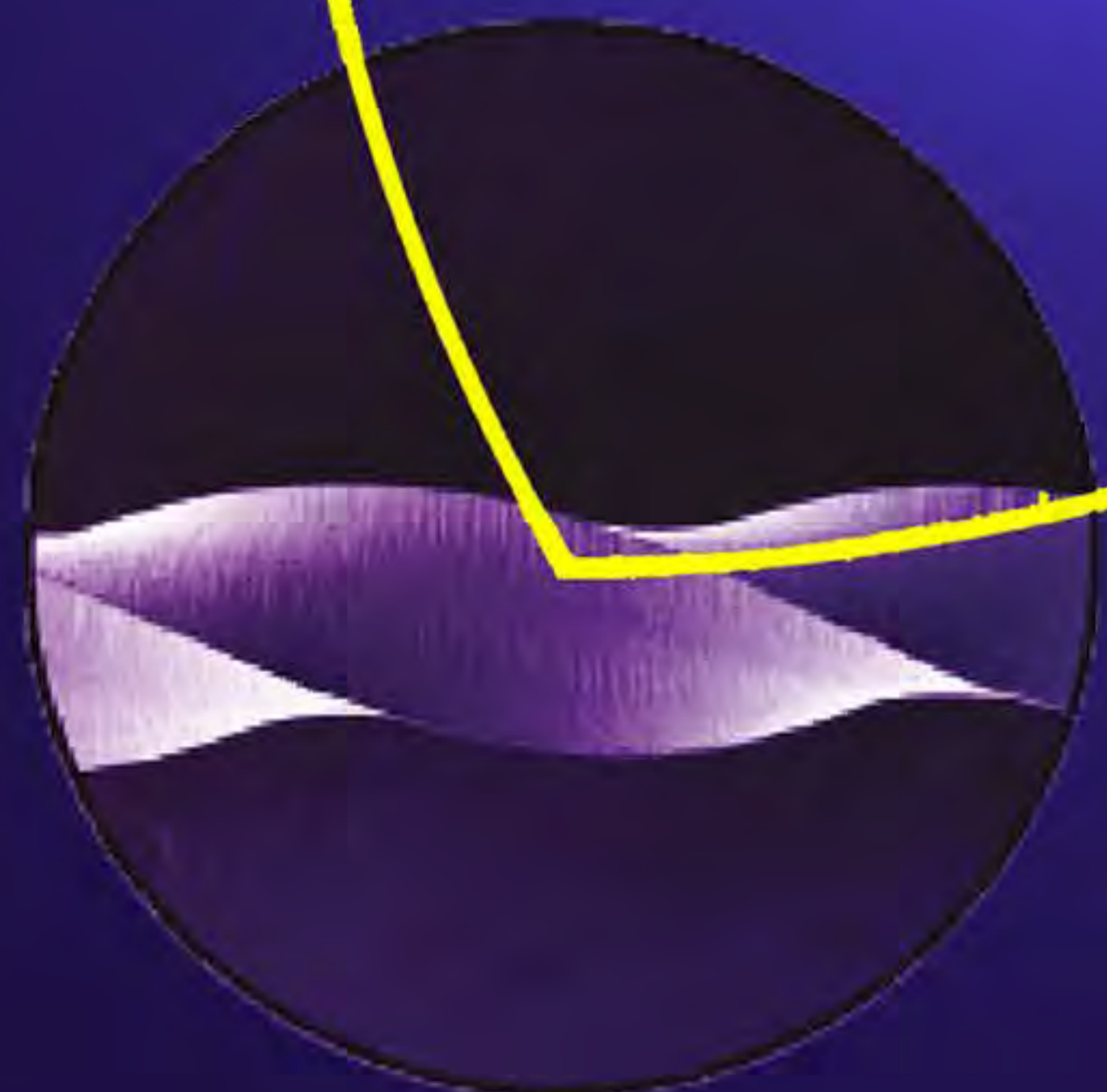
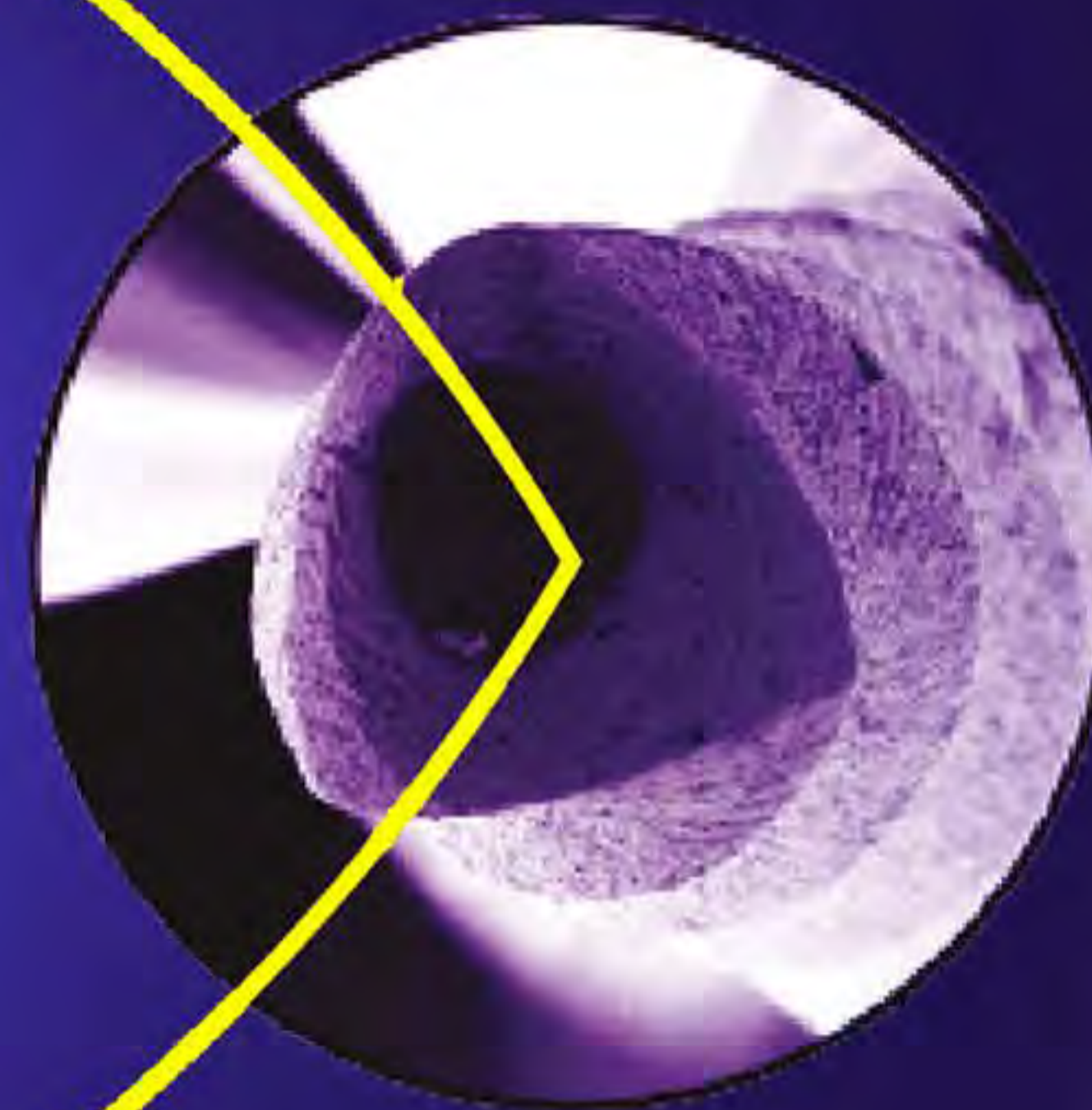
Tip Design

A non active tip without blades, with no cutting function, only for scouting. Avoids the creation of the ledges and perforations on the root canal walls



Cross section

Unique 3s cross section. Three sharp cutting blades. Respects The original Anatomy. Large and deep debris removal space, respecting the original root canal anatomy



Pitch Design

Increased gradually from the file tip. Removes dentine debris from the root canal to the pulp chamber. Avoids Breakings, sticking and gives more control inside the root canals.

Each blister contains 4 files of the same type, with the exception of the assorted blister packs presented below:

PLEX V - 04

Blister 4 assorted pieces



015/08 PLEX



015/03 PLEX



020/04 PLEX



025/04 PLEX

21mm DK90022100140 - 25mm DK90022500141 - 28mm DK90021800159 - 31mm DK90021800160

PLEX V - 06

Blister 4 assorted pieces



015/08 PLEX



015/03 PLEX



020/05 PLEX



025/06 PLEX

21mm DK90022100138 - 25mm DK90022500139 - 28mm DK90021800157 - 31mm DK90021800158

Standard sizes

19 mm

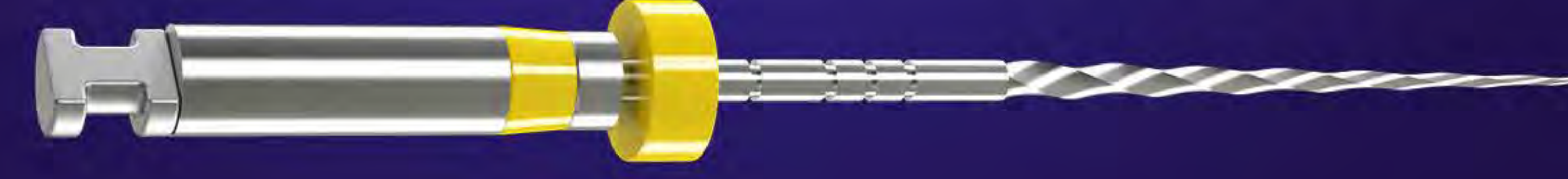


015/08 PLEX DK90021900100

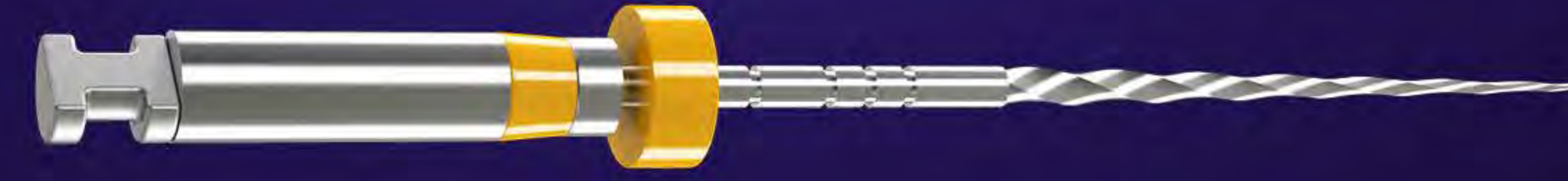
All sizes are available in the following lengths:
21 mm - 25 mm - 28 mm - 31 mm



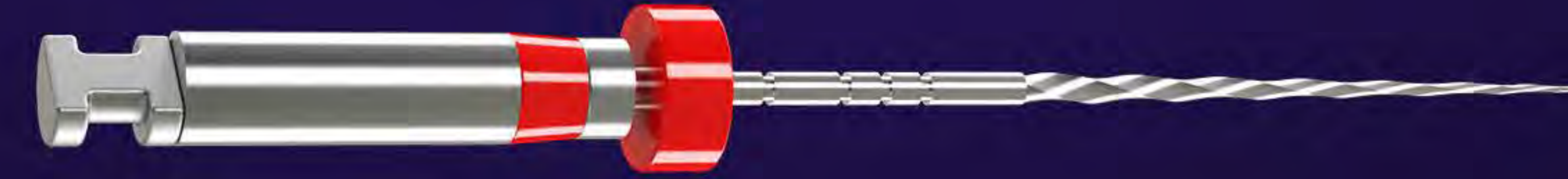
015/03 PLEX



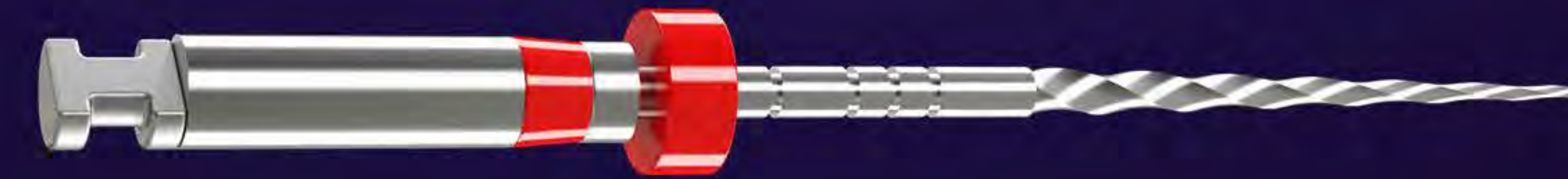
020/04 PLEX



020/05 PLEX



025/04 PLEX

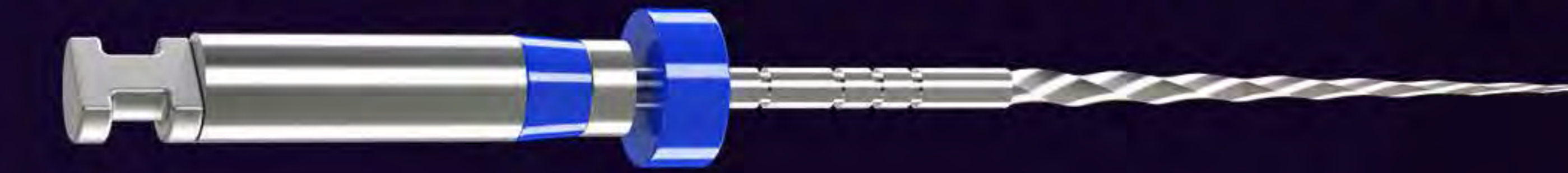


025/06 PLEX

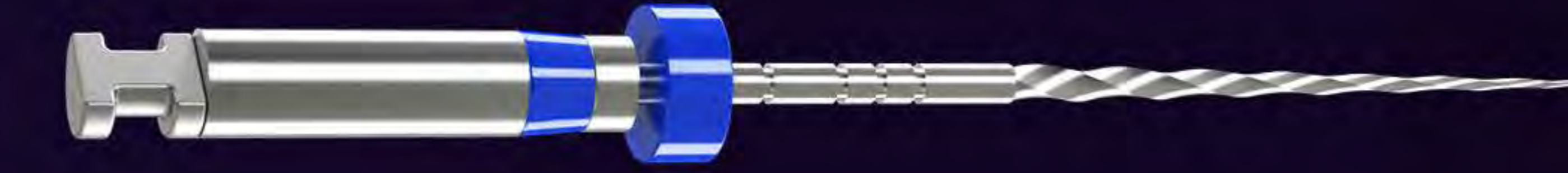
| Size | 21mm | 25mm | 28mm | 31mm |
|--------|---------------|---------------|---------------|---------------|
| 015/03 | DK90022100101 | DK90022500102 | DK90022800103 | DK90023100104 |
| 020/04 | DK90022100105 | DK90022500106 | DK90022800107 | DK90023100108 |
| 020/05 | DK90022100121 | DK90022500122 | DK90022800123 | DK90023100124 |
| 020/06 | DK90022100135 | DK90022500136 | DK90022800137 | DK90022800159 |
| 025/04 | DK90022100142 | DK90022500143 | DK90022800144 | DK90023100145 |
| 025/06 | DK90022100109 | DK90022500110 | DK90022800111 | DK90023100112 |

Extra sizes

All sizes are available in the following lengths:
21 mm - 25 mm - 28 mm - 31 mm



030/04 PLEX



030/06 PLEX



035/04 PLEX



040/04 PLEX



045/04 PLEX



050/04 PLEX



055/04 PLEX

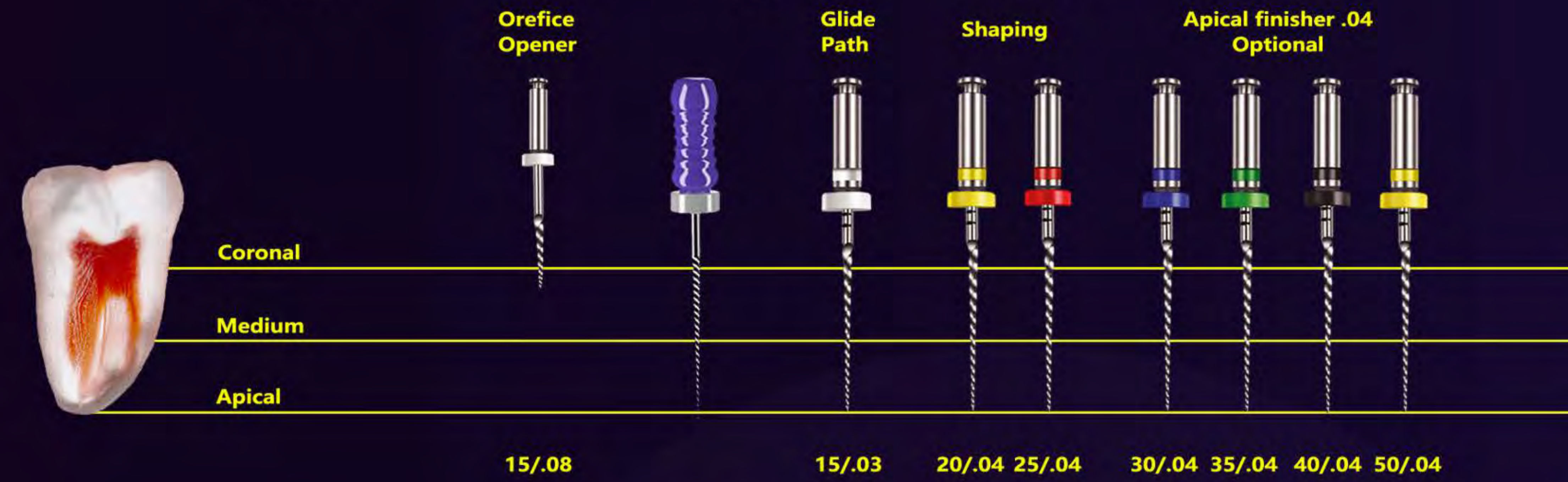


060/04 PLEX

| Size | 21mm | 25mm | 28mm | 31mm |
|--------|---------------|---------------|---------------|---------------|
| 030/04 | DK90022100157 | DK90022500158 | DK90022800159 | DK90023100160 |
| 030/06 | DK90022100125 | DK90022500126 | DK90022800127 | DK90023100128 |
| 035/04 | DK90022100113 | DK90022500114 | DK90022800115 | DK90023100116 |
| 040/04 | DK90022100129 | DK90022500130 | DK90022800131 | DK90022800157 |
| 045/04 | DK90021800107 | DK90025800107 | DK90028800107 | DK90031800107 |
| 050/04 | DK90022100132 | DK90022500133 | DK90022800134 | DK90022800158 |
| 055/04 | DK90021800109 | DK90025800109 | DK90028800109 | DK90031800109 |
| 060/04 | DK90021800140 | DK90025800140 | DK90028800140 | DK90031800150 |

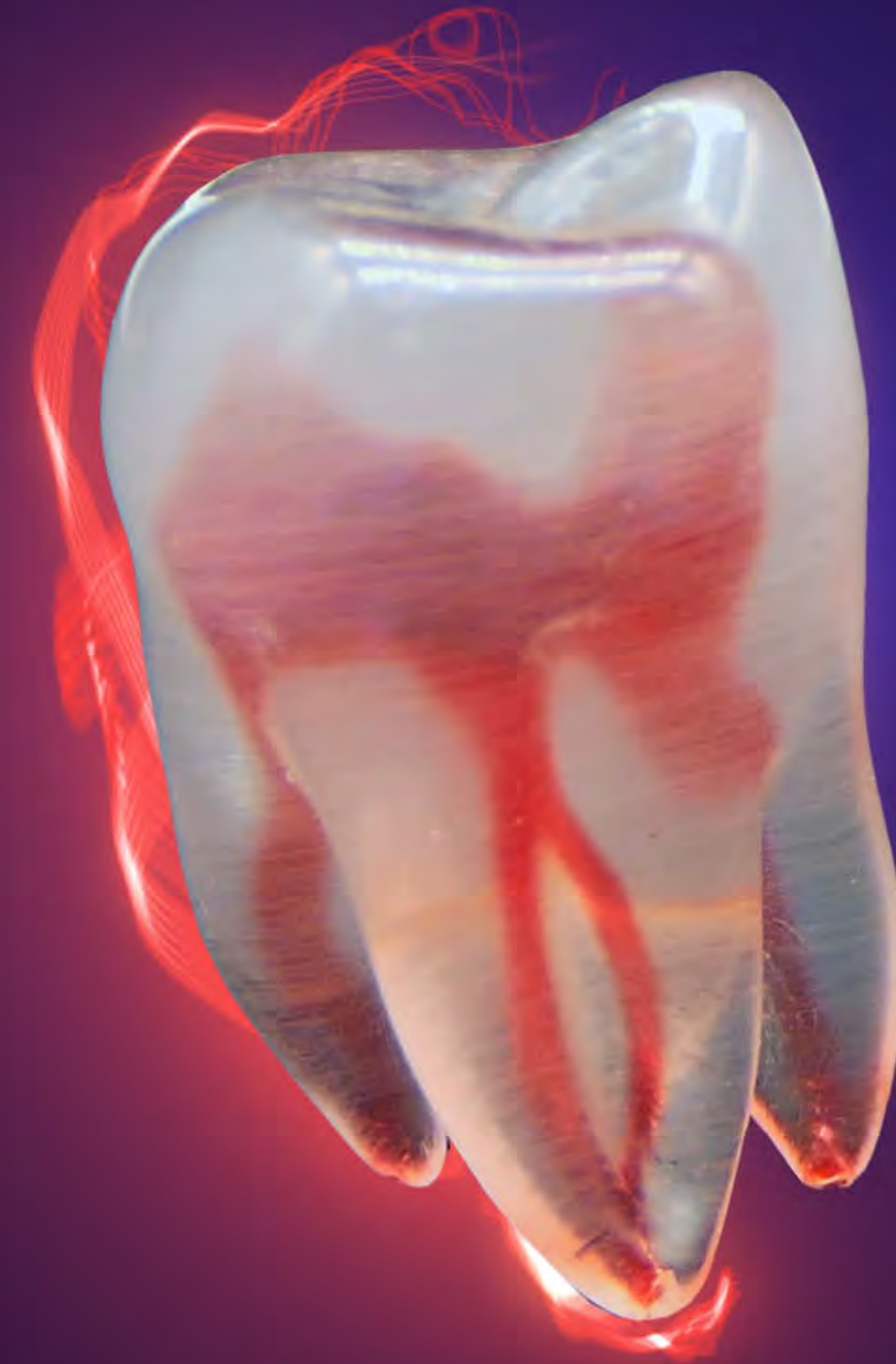
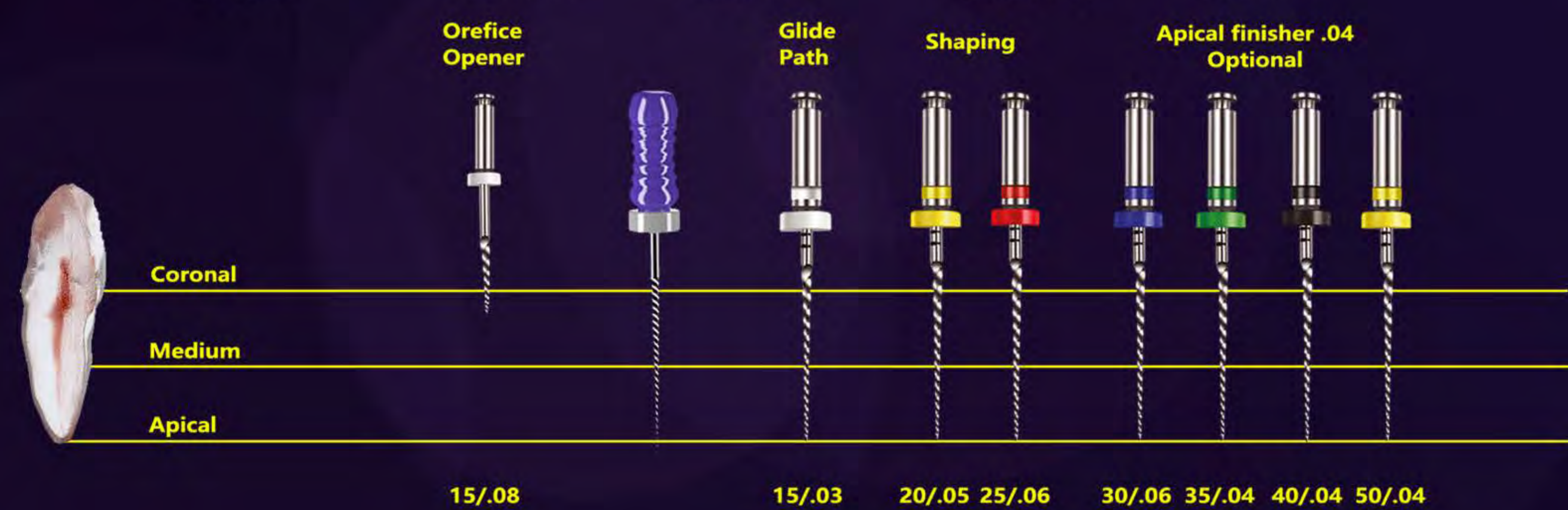
PLEX V 04 - Difficult Canals

| Mode | Open | Path Files | Finishing | |
|----------|----------|-------------------------------|-----------|----------|
| TAPER | 08 | 03 | 04 | 04 |
| DIAMETER | 15 | 15 | 20 | 25 |
| LENGTH | 19mm | 21 mm - 25 mm - 28 mm - 31 mm | | |
| TORQUE | 2.5 N.Cm | 1.5 N.Cm | 2.5 N.Cm | 2.5 N.Cm |
| SPEED | 500 RPM | 300 RPM | 500 RPM | 500 RPM |

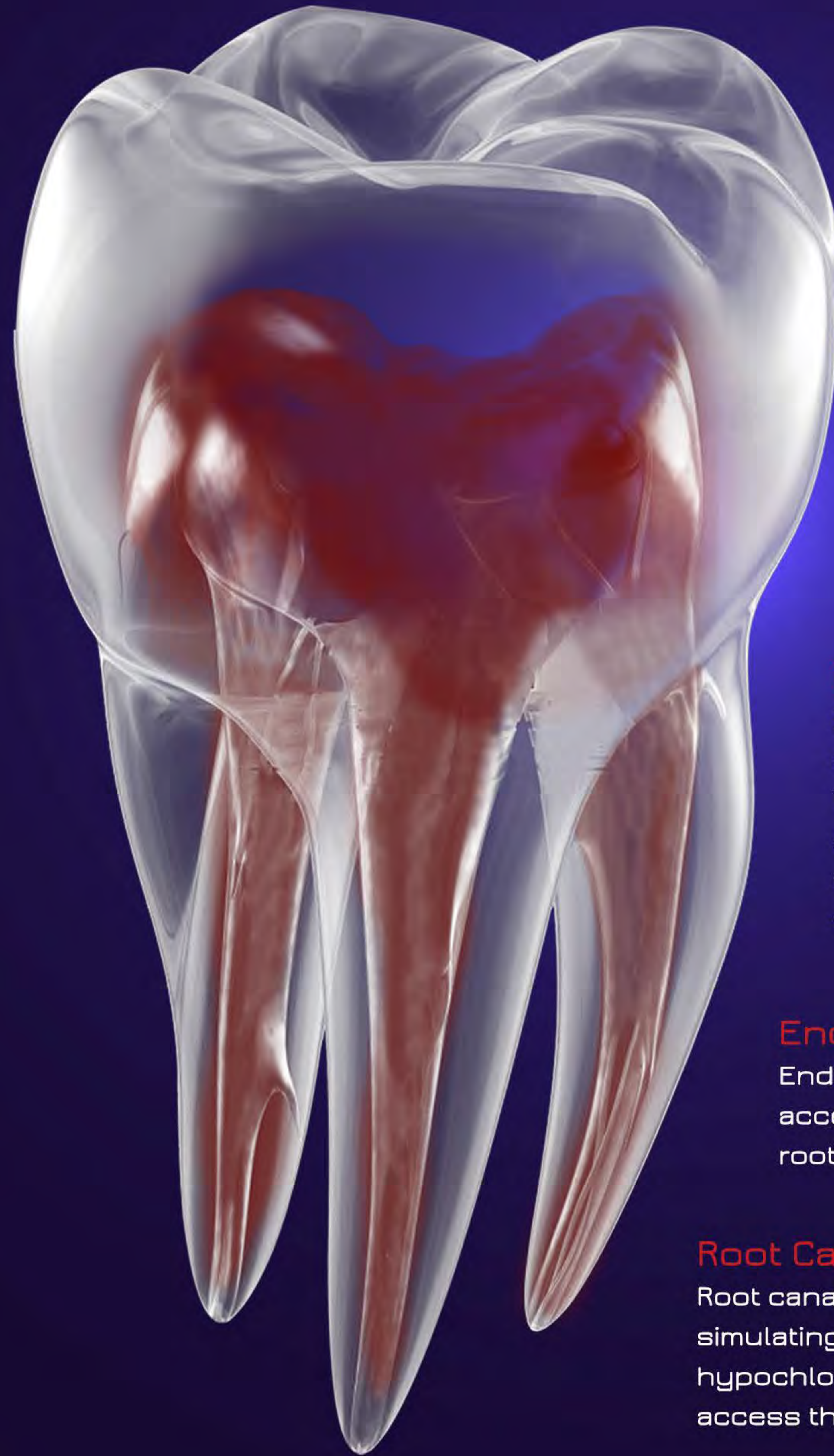


PLEX V 06 - Easy Canals

| Mode | Open | Path Files | Finishing | |
|----------|----------|-------------------------------|-----------|----------|
| TAPER | 08 | 03 | 05 | 06 |
| DIAMETER | 15 | 15 | 20 | 25 |
| LENGTH | 19mm | 21 mm - 25 mm - 28 mm - 31 mm | | |
| TORQUE | 2.5 N.Cm | 1.5 N.Cm | 2.5 N.Cm | 2.5 N.Cm |
| SPEED | 500 RPM | 300 RPM | 500 RPM | 500 RPM |



3D PRINTED TEETH
 3D PRINTED REPLICAS OF REAL TEETH



Heat resistant

Polimers used are heat-resistant, so high-speed burs don't gum up and the replica's canal walls don't melt when obturating with warm gutta-percha methods

Special patented resin

Real size tooth models made out of special patented resin material with hardness similar to dentin and that enables visual control of files during preparation

Multiple positions

Number and morphological position of root canals copies real tooth. There are a number of procedural endodontic challenges, S curves, cervical curves, mid-root bifurcations, apical confluencies etc.

Endodontic simulator

Endodontic simulator for training the access to the pulp chamber and root canal preparation tasks.

Root Canals

Root canals contain a red gel-like material simulating pulp tissue that dissolves in sodium hypochlorite. It is possible to learn the access through calcified pulp chambers.



UPPER INCISOR A



UPPER MOLAR A



UPPER MOLAR B



LOWER INCISOR A



LOWER INCISOR B



LOWER MOLAR A



LOWER MOLAR B



LOWER MOLAR C
ROOT CANAL A



PREMOLAR A



PREMOLAR B



CANINE A



CANINE B



PLEX VPLUS



| Size | 21mm | 25mm | 28mm | 31mm |
|---------|---------------|---------------|---------------|---------------|
| 012/03 | DR900221U0025 | DR900225U0025 | DR900228U0025 | DR900231U0025 |
| 017/045 | DR900221U0035 | DR900225U0035 | DR900228U0035 | DR900231U0035 |
| 022/055 | DR900221U0045 | DR900225U0045 | DR900228U0045 | DR900231U0045 |

ASSORTED PACKAGE

| | 21mm | 25mm | 31mm |
|---------------|---------------|---------------|---------------|
| [19mm] 015/08 | | | |
| 012/03 | | | |
| 017/045 | DR900221U0005 | DR900225U0105 | DR900225U0005 |
| 022/055 | | | |
| 025/06 | | | |

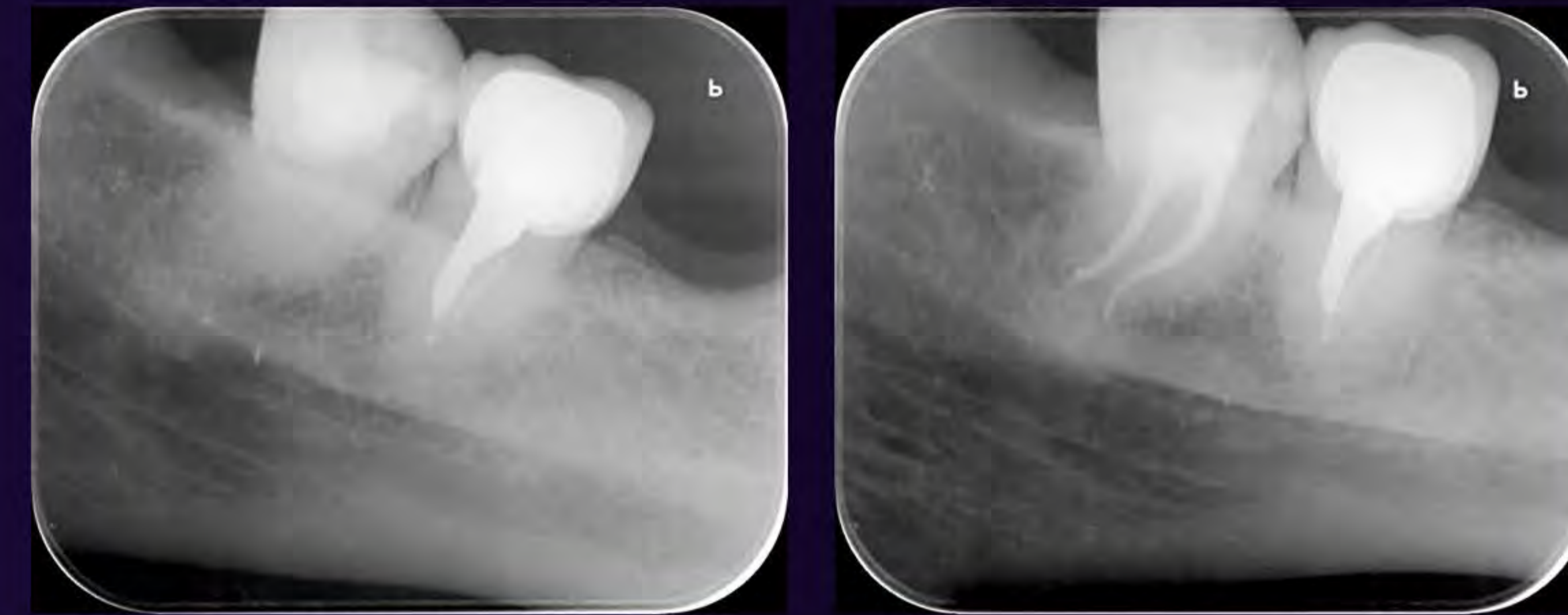


PLEX RC ONE

Everything in **one** instrument

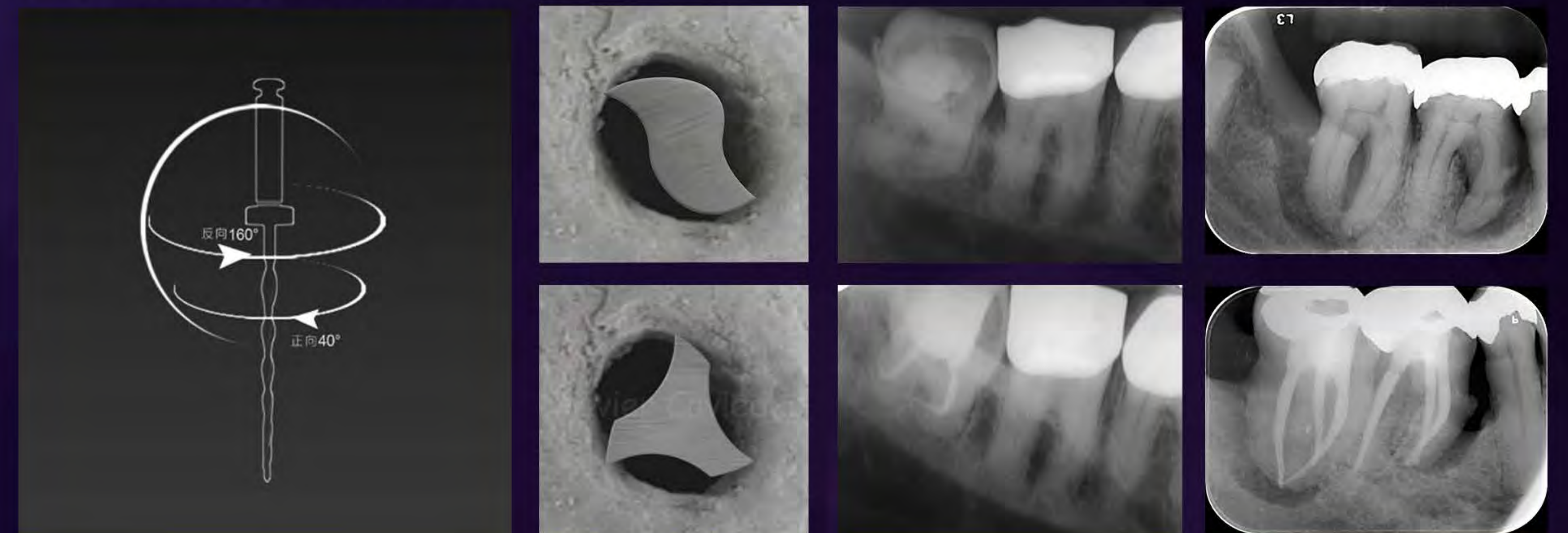
Easy

Plex RC-ONE is designed to completely prepare a root canal with one single reciprocating instrument in most cases, being easy to learn and teach, with less probability of procedural errors. The selection of the Plex RC-One file, depends on the clinical case difficulty.



Safe

A unique design with two different cross section profiles, a reciprocating movement with balanced rotation angles and a very flexible alloy, generate maximum resistance to cyclic fatigue and reduce the risk of instrument fracture. Optimal for the management of canals with severe curvatures and complex anatomies.



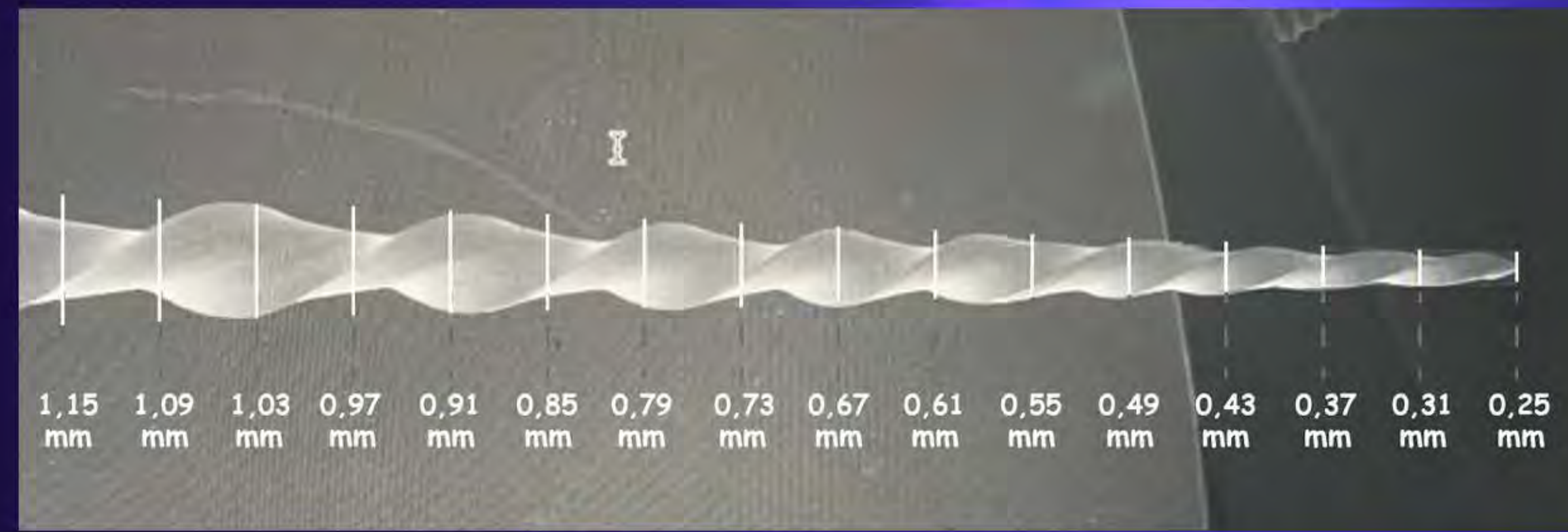
cross section profiles

severe curvatures

complex anatomies

Efficient and Effective

Preparation time is reduced due to the instrument design with a constant taper, two cross-section profiles and a great cutting capacity, which enhances preparation and irrigation. Modified convex triangular cross-section of the tip provide instrument stability and the S-shaped cross-section of the file body helps preserving the original shape of the canal. It has a variable helical angle that allows an efficient debris removal coronally, an inactive pilot tip to maintain the original shape of the canal and a short transition angle to provide efficient cutting.



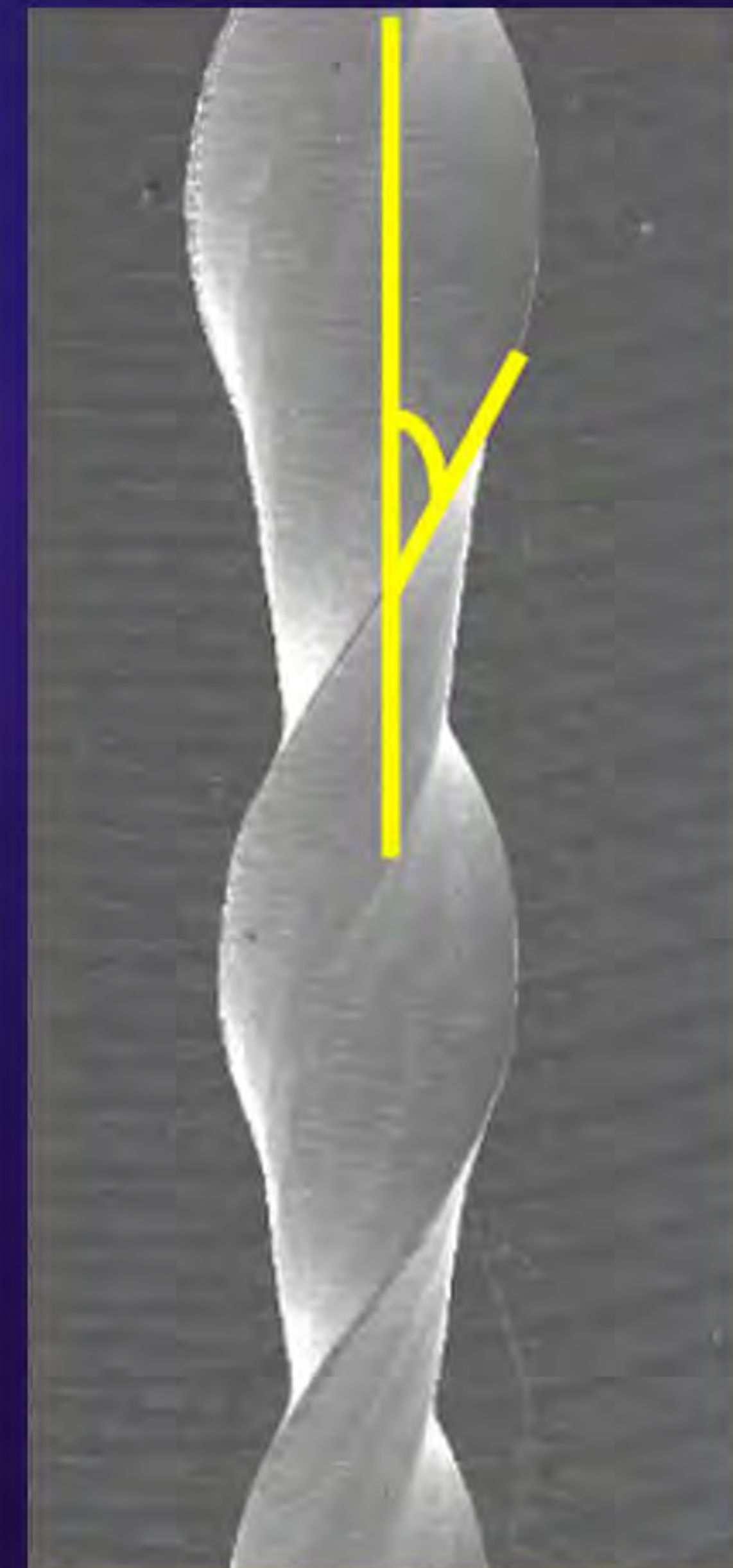
6% Taper

Flexible

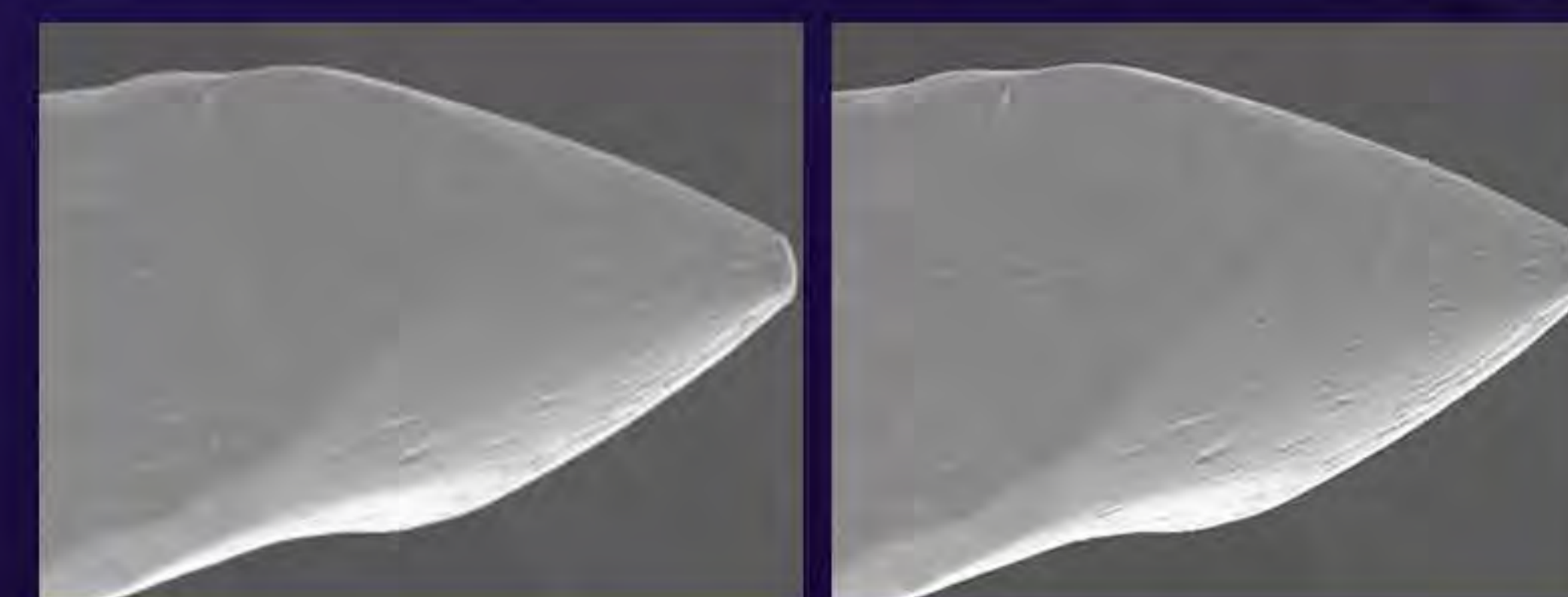
Plex RC-ONE is made of a modified nickel-titanium CM wire alloy. It is manufactured using an exclusive thermal process at room temperature, that gives it a great flexibility that helps preserve the original shape of the canal due to memory control, great cutting capacity and high resistance to cyclic fatigue.



Original shape



variable helical angle



inactive tip

short transition angle

Instrument Specifications

| | | | | |
|-------|----|----|----|----|
| TAPER | 06 | 05 | 04 | 04 |
|-------|----|----|----|----|

| | | | | |
|------|----|----|----|----|
| SIZE | 25 | 40 | 50 | 35 |
|------|----|----|----|----|

| | | | | |
|--------|----------------------------|--|--|--|
| LENGTH | 21mm / 25 mm / 28mm / 31mm | | | |
|--------|----------------------------|--|--|--|

| | | | | |
|--------|-------------|-------------|-------------|-------------|
| TORQUE | 2.0-3.0N-CM | 2.0-3.0N-CM | 2.0-3.0N-CM | 2.0-3.0N-CM |
|--------|-------------|-------------|-------------|-------------|

| | | | | |
|-------|------------|------------|------------|------------|
| SPEED | 300-500RPM | 300-500RPM | 300-500RPM | 300-500RPM |
|-------|------------|------------|------------|------------|

| | | | | |
|----------------|--|--|--|--|
| ROTATION ANGLE | clockwise 40° counterclockwise 160° | clockwise 40° counterclockwise 160° | clockwise 40° counterclockwise 160° | clockwise 40° counterclockwise 160° |
|----------------|--|--|--|--|

| Size | 21mm | 25mm | 28mm | 31mm |
|--------|---------------|---------------|---------------|---------------|
| 025/06 | DHC9002212506 | DHC9002252506 | DHC9002282506 | DHC9002312506 |
| 040/05 | DHC9002214005 | DHC9002254005 | DHC9002284005 | DHC9002314005 |
| 050/04 | DHC9002215004 | DHC9002255004 | DHC9002285004 | DHC9002315004 |
| 035/04 | DHC9002213504 | DHC9002253504 | DHC9002283504 | DHC9002313504 |

| Size 025/04 | | | | | |
|---------------|---------------|---------------|---------------|---------------|---------------|
| 16mm | 19mm | 21mm | 25mm | 28mm | 31mm |
| DHC9002162504 | DHC9002192504 | DHC9002212504 | DHC9002252504 | DHC9002282504 | DHC9002312504 |

| Size ASSORTED PACKAGE | | | | |
|-----------------------|---------------|---------------|---------------|---------------|
| | 21mm | 25mm | 28mm | 31mm |
| 025/06 | | | | |
| 040/05 | DH900221R0003 | DH900225R0003 | DH900228R0003 | DH900231R0003 |
| 050/04 | | | | |



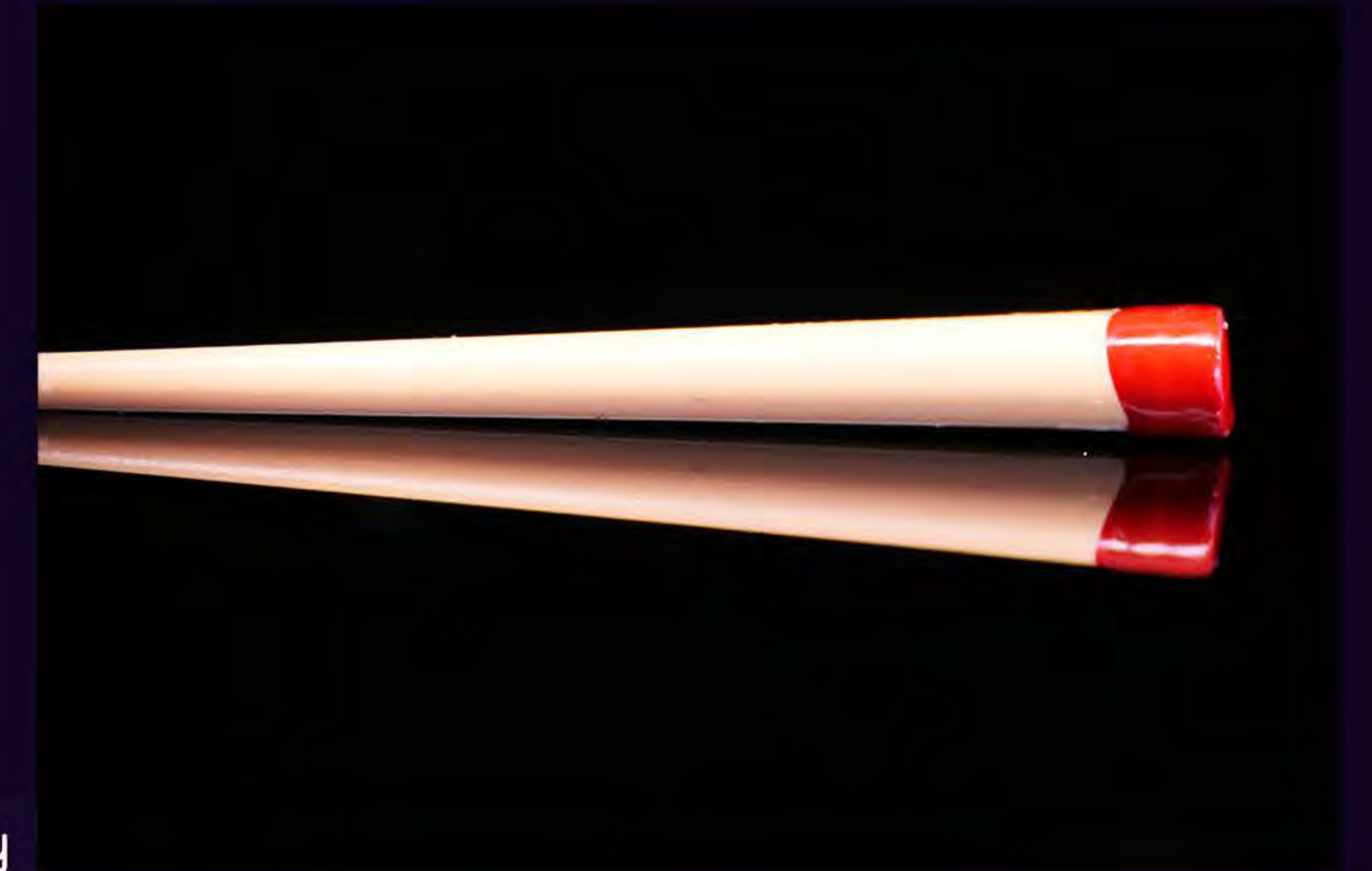
Gutta Percha Points

MADE BY INJECTION MOLDING

Gutta-Percha is being used as a filling material (permanent use) of the cleaned root canals of tooth intended to fill the root of the tooth.

All the elements are manufactured in strictly accordance with internationally recognized standards.

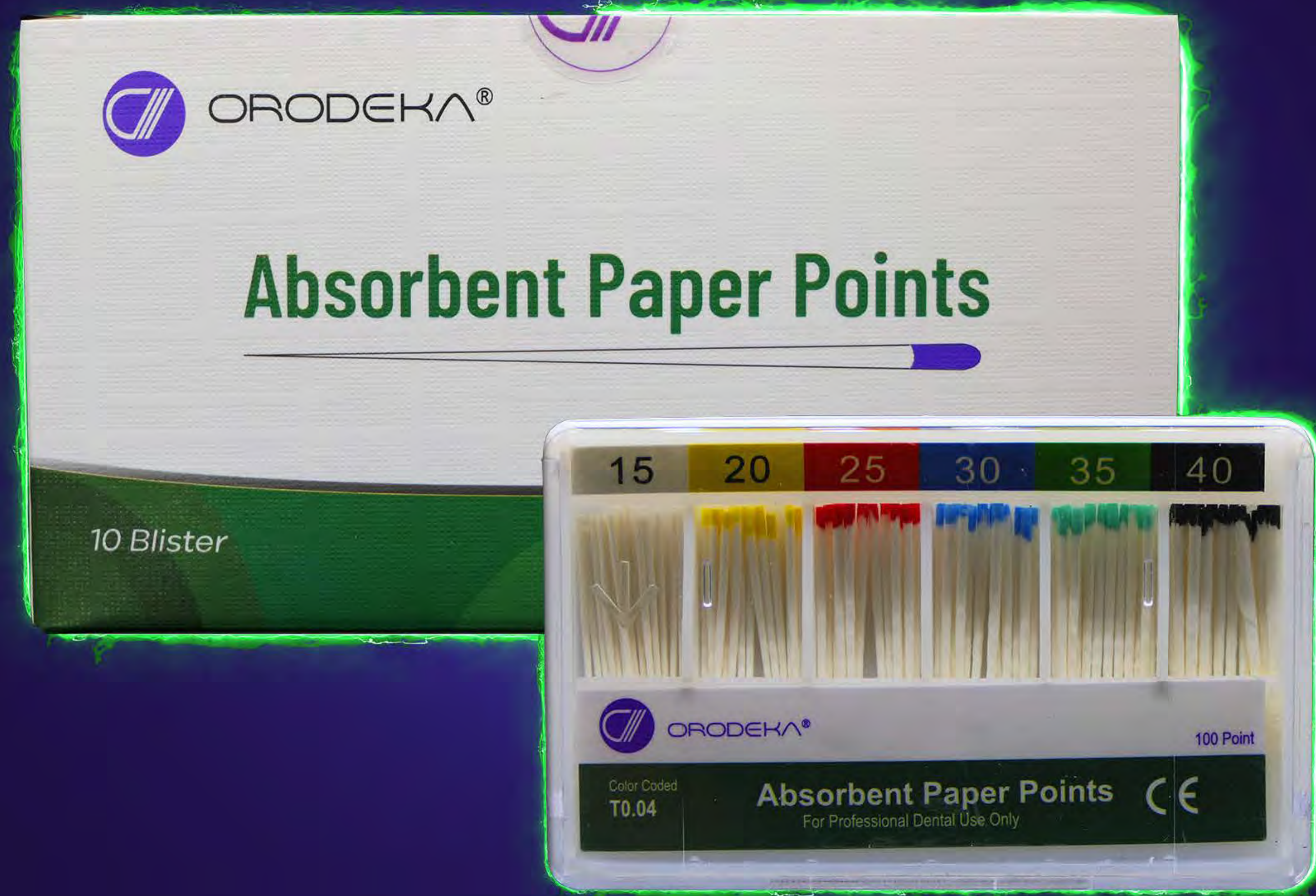
- True to size and shape with excellent workability
- Long shelf life and freshness assured
- Made by injection molding from finest Gutta-percha
- Uniformed and non distorting crimp
- Stiff but flexible to provide ideal workability



Instrument Specifications

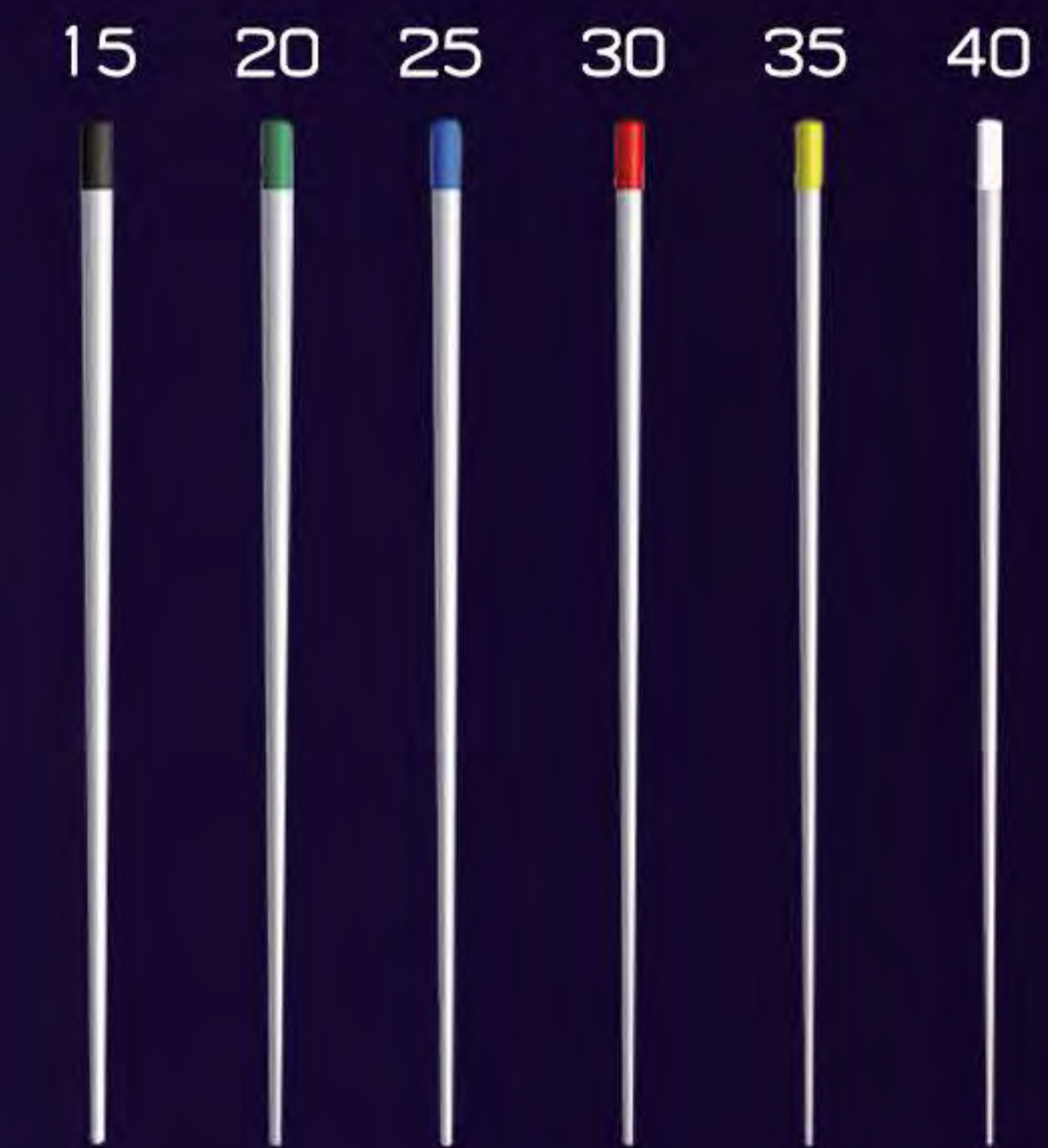


G O-200(0.02 Taper) - G O-400(0.04 Taper) - G O-600(0.06 Taper)



ABSORBENT PAPER POINTS

| Taper | Model |
|---------------------------------|--------|
| PP-200(0.02 taper) (200PCS/BOX) | 15# |
| | 20# |
| | 25# |
| | 30# |
| | 35# |
| | 40# |
| | 45# |
| | 50# |
| | 55# |
| | 60# |
| PP-400(0.04 taper) (120PCS/BOX) | 70# |
| | 80# |
| | 15-40# |
| | 45-80# |
| | 15# |
| | 20# |
| | 25# |
| | 30# |
| | 35# |
| | 40# |
| PP-600(0.06 taper) (120PCS/BOX) | 15-40# |
| | 15# |
| | 20# |
| | 25# |
| | 30# |
| | 35# |
| | 40# |
| | 15-40# |



Absorbent Paper Points is a device made from highly absorbent natural paper and it's intended to clean the tooth root canal by insertion and removal supplied in sterilized condition.

- True to size and shape with excellent workability
- Uniform hand-rolled to exact compliance to allowable tolerance
- Unsurpassed consistency in quality
- Rigid enough to be easily inserted into the moist root canal without curing or blending and be highly absorbent and excellent radio-sterilized





Root Canal H-FILES

| Size | 21mm | 25mm | 28mm | 31mm |
|---------|---------------|---------------|---------------|---------------|
| ● 006 | DK90012100100 | DK90012100101 | DK90012100102 | DK90012100103 |
| ● 008 | DK90012100104 | DK90012100105 | DK90012100106 | DK90012100107 |
| ● 010 | DK90012100108 | DK90012100109 | DK90012100110 | DK90012100111 |
| ● 015 | DK90012100112 | DK90012100113 | DK90012100114 | DK90012100115 |
| ● 020 | DK90012100116 | DK90012100117 | DK90012100118 | DK90012100119 |
| ● 025 | DK90012100120 | DK90012100121 | DK90012100122 | DK90012100123 |
| ● 030 | DK90012100124 | DK90012100125 | DK90012100126 | DK90012100127 |
| ● 035 | DK90012100128 | DK90012100129 | DK90012100130 | DK90012100131 |
| ● 040 | DK90012100132 | DK90012100133 | DK90012100134 | DK90012100135 |
| 015-040 | DK90012100136 | DK90012100137 | DK90012100138 | DK90012100139 |
| 045-080 | DK90012100140 | DK90012100141 | DK90012100142 | DK90012100143 |

Root Canal K-FILES

| Size | 21mm | 25mm | 28mm | 31mm |
|---------|---------------|---------------|---------------|---------------|
| ■ 006 | DK90012100188 | DK90012100189 | DK90012100190 | DK90012100191 |
| ■ 008 | DK90012100192 | DK90012100193 | DK90012100194 | DK90012100195 |
| ■ 010 | DK90012100196 | DK90012100197 | DK90012100198 | DK90012100199 |
| ■ 015 | DK90012100200 | DK90012100201 | DK90012100202 | DK90012100203 |
| ■ 020 | DK90012100204 | DK90012100205 | DK90012100206 | DK90012100207 |
| ■ 025 | DK90012100208 | DK90012100209 | DK90012100210 | DK90012100211 |
| ■ 030 | DK90012100212 | DK90012100213 | DK90012100214 | DK90012100215 |
| ■ 035 | DK90012100216 | DK90012100217 | DK90012100218 | DK90012100219 |
| ■ 040 | DK90012100220 | DK90012100221 | DK90012100222 | DK90012100223 |
| 015-040 | DK90012100224 | DK90012100225 | DK90012100226 | DK90012100227 |
| 045-080 | DK90012100228 | DK90012100229 | DK90012100230 | DK90012100231 |

- Packed with 6 files per blister, available of single or assorted size
- Made of stainless steel

Root Canal REAMERS

| Size | 21mm | 25mm | 28mm | 31mm |
|---------|---------------|---------------|---------------|---------------|
| ▲ 006 | DK90012100144 | DK90012100145 | DK90012100146 | DK90012100147 |
| ▲ 008 | DK90012100148 | DK90012100149 | DK90012100150 | DK90012100151 |
| ▲ 010 | DK90012100152 | DK90012100153 | DK90012100154 | DK90012100155 |
| ▲ 015 | DK90012100156 | DK90012100157 | DK90012100158 | DK90012100159 |
| ▲ 020 | DK90012100160 | DK90012100161 | DK90012100162 | DK90012100163 |
| ▲ 025 | DK90012100164 | DK90012100165 | DK90012100166 | DK90012100167 |
| ▲ 030 | DK90012100168 | DK90012100169 | DK90012100170 | DK90012100171 |
| ▲ 035 | DK90012100172 | DK90012100173 | DK90012100174 | DK90012100175 |
| ▲ 040 | DK90012100176 | DK90012100177 | DK90012100178 | DK90012100179 |
| 015-040 | DK90012100180 | DK90012100181 | DK90012100182 | DK90012100183 |
| 045-080 | DK90012100184 | DK90012100185 | DK90012100186 | DK90012100187 |

- Used for Vertical of root canal condensation
- Packed with 6 files per blister, available of single or assorted size
- Made of stainless steel

Root Canal G-FILE

| Size | 21mm | 25mm | 28mm | 31mm |
|---------|---------------|---------------|---------------|---------------|
| 006 | DK90012100245 | DK90012100246 | DK90012100244 | DK90012100247 |
| 008 | DK90012100249 | DK90012100250 | DK90012100248 | DK90012100251 |
| 010 | DK90012100253 | DK90012100254 | DK90012100252 | DK90012100255 |
| 012 | DK90012100257 | DK90012100258 | DK90012100256 | DK90012100259 |
| 015 | DK90012100261 | DK90012100262 | DK90012100260 | DK90012100263 |
| 006-010 | DK90012100265 | DK90012100266 | DK90012100264 | DK90012100267 |

- More flexible and more harder than the current hand use files
- Used for Vertical of root canal condensation
- Packed with 6 files per blister, available of single or assorted size
- Made of stainless steel

PLEX BOX



PLEX BOX

PB601

The multi-functional root canal file box is made of metal material, and there are several holes and slots for measuring the length of the root canal file on the product, which plays the role of recording the number of root canal files and measuring the length of the root canal files. Passive products. Non-sterile.



ORODEKA®

EXCLUSIVE DISTRIBUTOR IN UAE



☎ 800 555 222

@ info@prolink.ae

📷 @prolinkuae

📘 Prolink UAE

prolink.ae